

2

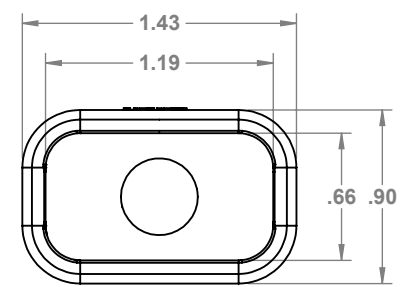
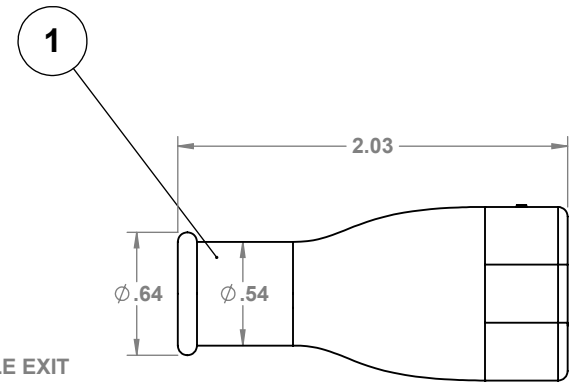
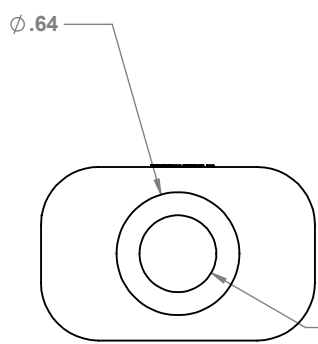
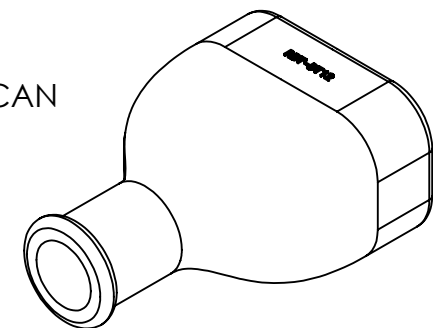
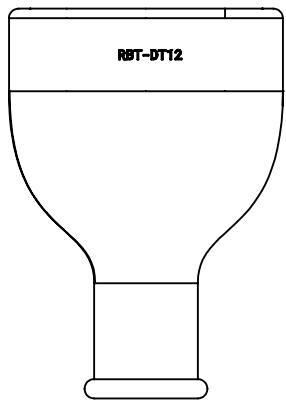
1

B

B

1

IF ADDITIONAL TAIL SEALING IS REQUIRED, A SHORT PIECE OF APPROPRIATELY SIZED ADHESIVE-LINED HEATSHRINK TUBING CAN BE USED.



A

A

NOTES:
 TO BE USED WITH 12 WAY DT SERIES HOUSINGS THAT USE THE INEGRATED SHRINK BOOT ADAPTER MODIFICATION.
 MOD CODES :
 • E008
 • CE13
 • CE12
 • CE04
 • EP20

PLEASE REFER TO THE CONNECTOR MFG DATASHEETS FOR THE FILL LIST OF MOD CODES

PROPRIETARY AND CONFIDENTIAL
 THE INFORMATION CONTAINED IN THIS DRAWING IS THE SOLE PROPERTY OF PROWIREUSA, LLC. ANY REPRODUCTION IN PART OR AS A WHOLE WITHOUT THE WRITTEN PERMISSION OF PROWIREUSA, LLC IS PROHIBITED.

COMMENTS:

- INTENDED FOR GENERAL AUTOMOIVE AND INDUSTRIAL USES. RESITS COMMON AUTOMOTIVE FLUIDS

TEMP -40 °C-125°C

APPLICATION AUTOMOTIVE / INDUSTRIAL

UNLESS OTHERWISE SPECIFIED:
 DIMENSIONS ARE IN INCHES
 TOLERANCES:
 FRACTIONAL ±
 ANGULAR: MACH ± BEND ±
 TWO PLACE DECIMAL ±
 THREE PLACE DECIMAL ±

INTERPRET GEOMETRIC TOLERANCING PER:

	NAME	DATE
DRAWN	CJK	8/28/23
CHECKED	JD	8/28/23
MATERIAL	FLEXIBLE RUBBER	
FINISH	MATTE BLACK	
DO NOT SCALE DRAWING		

TITLE:

DEUTSCH DT SERIES 12 WAY RUBBER BOOT

SIZE	DWG. NO.	REV
A	RBT-DT12	0
SCALE: 1:1	WEIGHT: .0207 LBS	SHEET 1 OF 1



2

1