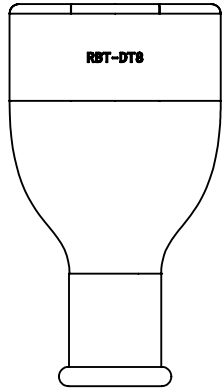


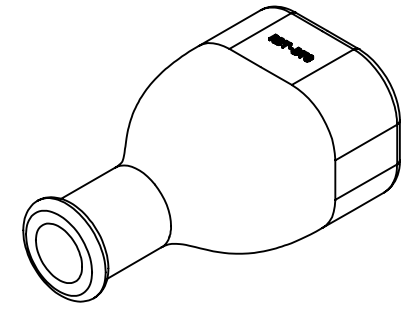
2

1



1

IF ADDITIONAL TAIL SEALING IS REQUIRED, A SHORT PIECE OF APPROPRIATELY SIZED ADHESIVE-LINED HEATSHRINK TUBING CAN BE USED.

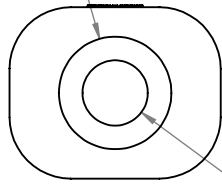


B

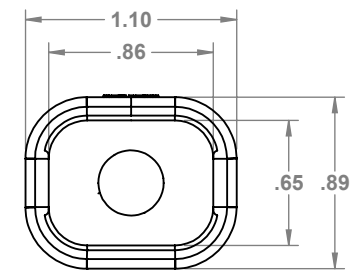
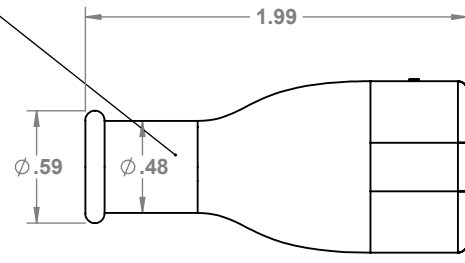
B

1

Ø .59



Ø .34 CABLE EXIT



A

A

**NOTES:**  
 TO BE USED WITH 8 WAY DT SERIES HOUSINGS THAT USE THE INTEGRATED SHRINK BOOT ADAPTER MODIFICATION.  
 MOD CODES :  
 • E008  
 • CE13  
 • CE04  
 • CE12  
 PLEASE REFER TO THE CONNECTOR MFG DATASHEETS FOR THE FULL LIST OF MOD CODES

**PROPRIETARY AND CONFIDENTIAL**  
 THE INFORMATION CONTAINED IN THIS DRAWING IS THE SOLE PROPERTY OF PROWIREUSA, LLC. ANY REPRODUCTION IN PART OR AS A WHOLE WITHOUT THE WRITTEN PERMISSION OF PROWIREUSA, LLC IS PROHIBITED.  
 COMMENTS:  
 • INTENDED FOR GENERAL AUTOMOTIVE AND INDUSTRIAL USES.  
 • RESISTS COMMON AUTOMOTIVE FLUIDS  
 TEMP -40 °C-125°C  
 APPLICATION AUTOMOTIVE / INDUSTRIAL

UNLESS OTHERWISE SPECIFIED:  
 DIMENSIONS ARE IN INCHES  
 TOLERANCES:  
 FRACTIONAL ±  
 ANGULAR: MACH ± BEND ±  
 TWO PLACE DECIMAL ±  
 THREE PLACE DECIMAL ±  
 INTERPRET GEOMETRIC TOLERANCING PER:

	NAME	DATE
DRAWN	CJK	8/28/23
CHECKED	JD	8/28/23
MATERIAL	FLEXIBLE RUBBER	
FINISH	MATTE BLACK	
DO NOT SCALE DRAWING		

TITLE:		
<b>DEUTSCH DT SERIES 8 WAY RUBBER BOOT</b>		
SIZE	DWG. NO.	REV
<b>A</b>	<b>RBT-RT8</b>	<b>0</b>
SCALE: 1:1	WEIGHT: .0168 LBS	SHEET 1 OF 1



2

1