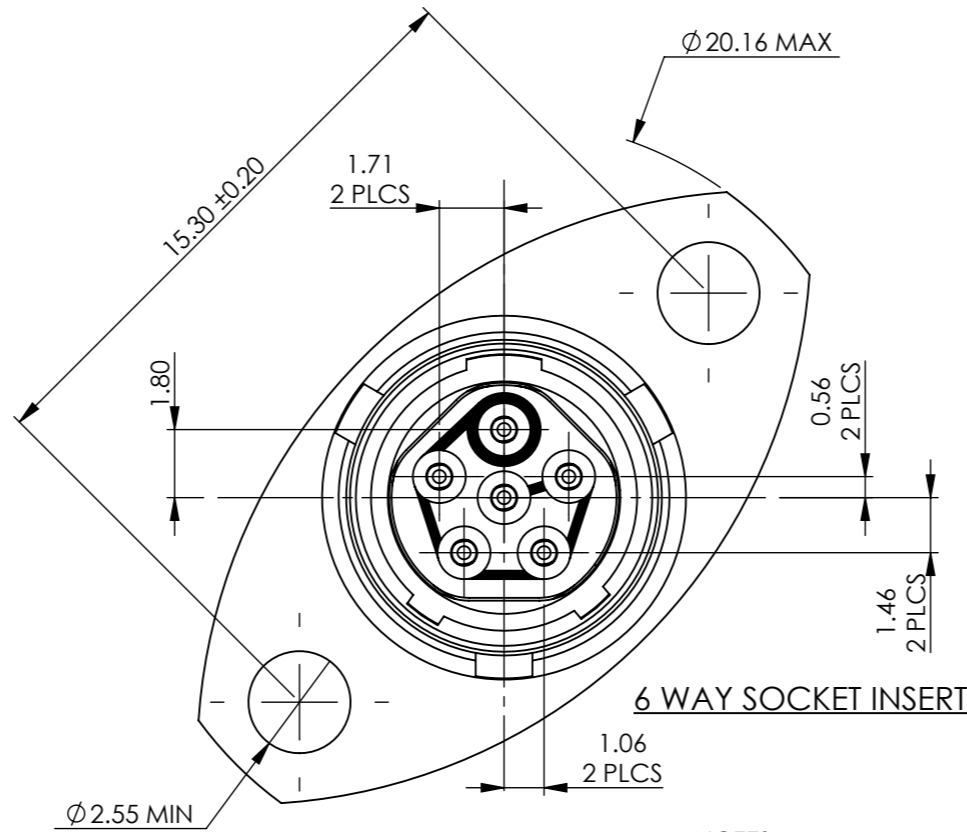
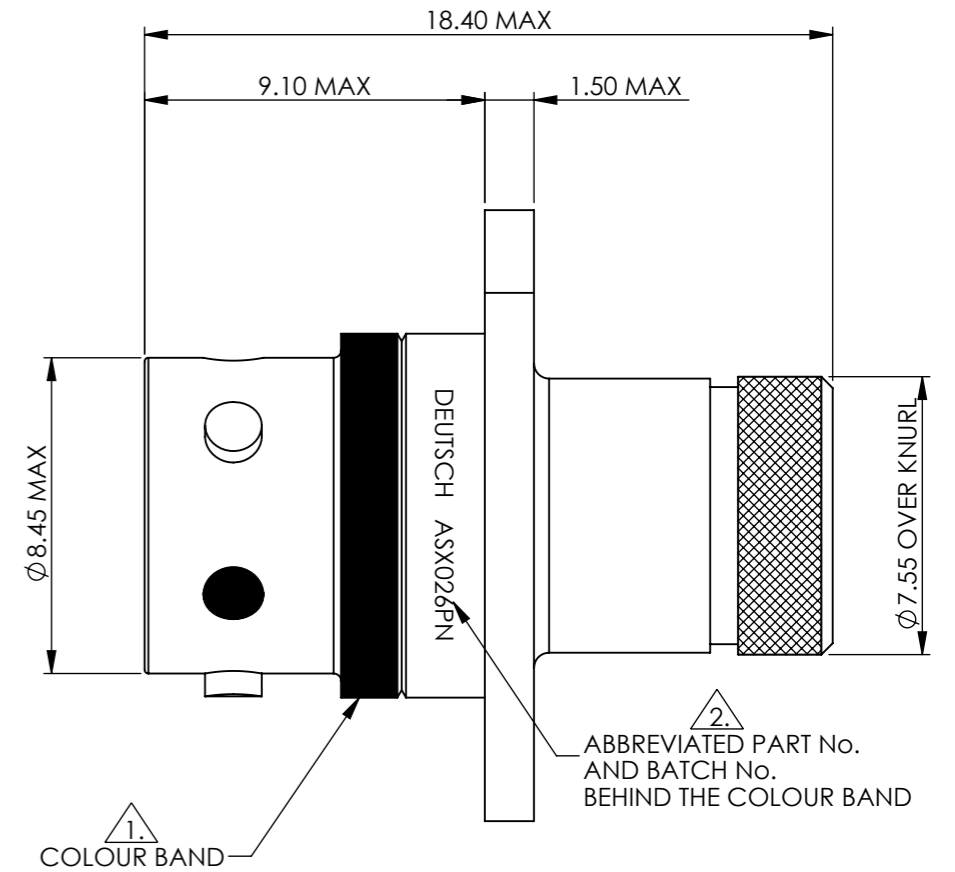


6 WAY PIN INSERT

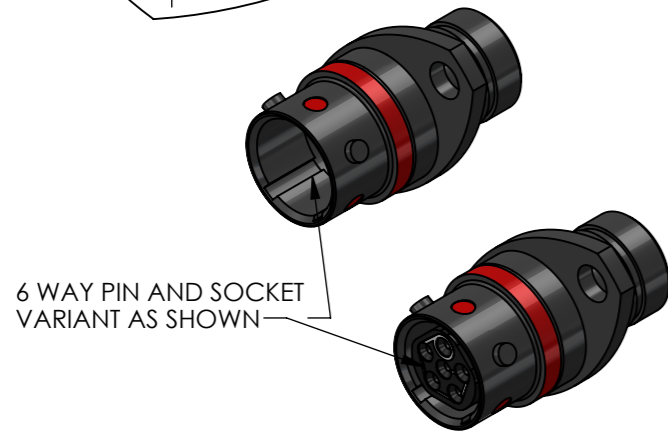


6 WAY SOCKET INSERT



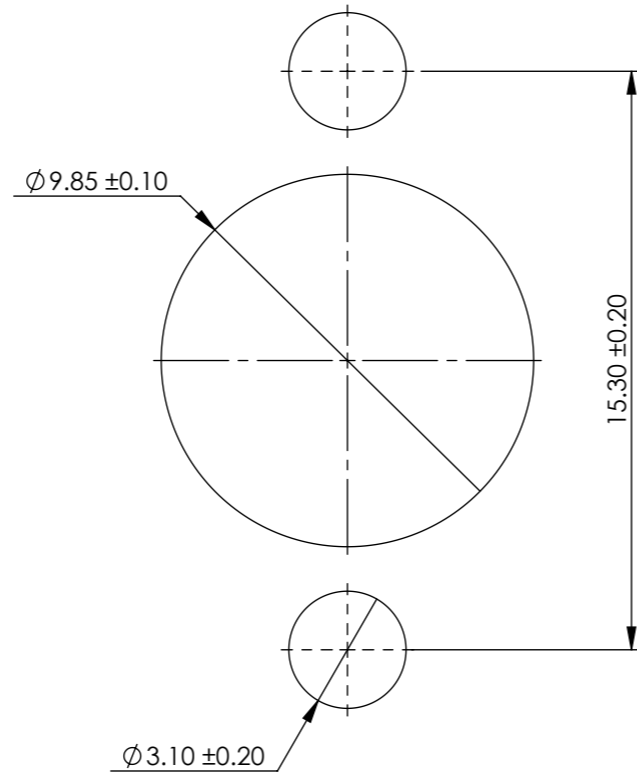
1. COLOUR BAND

2. ABBREVIATED PART No. AND BATCH No. BEHIND THE COLOUR BAND



6 WAY PIN AND SOCKET VARIANT AS SHOWN

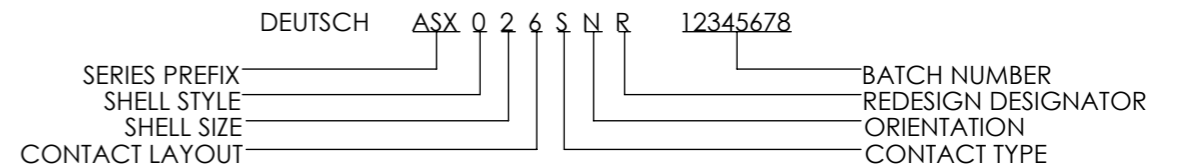
RECOMMENDED PANEL CUT OUT DETAIL



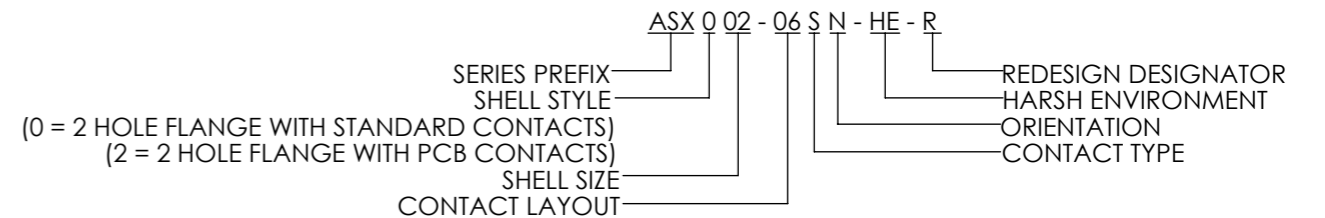
NOTES:

1. CONNECTOR ORIENTATION IDENTIFIED BY COLOUR BAND APPLIED AS BELOW.  
 N - ORIENTATION = RED                      D - ORIENTATION = GREEN  
 A - ORIENTATION = YELLOW                E - ORIENTATION = GREY  
 B - ORIENTATION = BLUE                  U - ORIENTATION = VIOLET  
 C - ORIENTATION = ORANGE

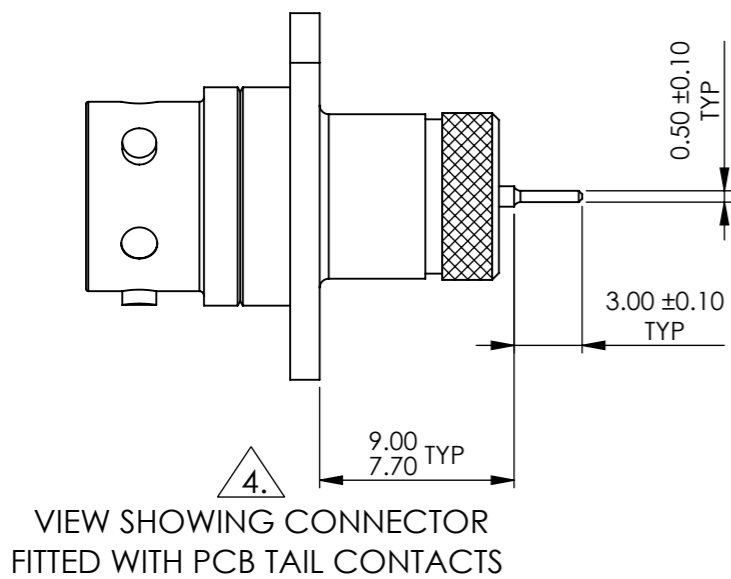
2. PART MARKING EXAMPLE:



3. FULL PART NUMBER STRUCTURE TO BE USED FOR ORDERING:-



4. PCB CONNECTORS WILL BE SUPPLIED PRINTED AS AN ASX0 BUT SUPPLIED WITH PCB CONTACTS. THE ASX2 PART NUMBER WILL BE PRINTED ON THE OUTER PACKAGING. ALL CONTACTS WILL BE SUPPLIED LOOSE.



VIEW SHOWING CONNECTOR FITTED WITH PCB TAIL CONTACTS

BS8888	MATERIAL:	FINISH:	
THIRD ANGLE PROJECTION	-----	-----	
UNLESS OTHERWISE STATED: DIMENSIONS: mm [INCHES]	TITLE: RECEPT ASSY. 2 HOLE FLANGE. ASX 6 WAY. REDESIGN. ENVELOPE DETAILS.		TYPE: CUSTOMER DRAWING DEUTSCH TE CONNECTIVITY UK LTD., ST. LEONARDS-ON-SEA, TN38 9RF, UK.
IF IN DOUBT, ASK	SIZE: A3	SCALE: 5:1	DRAWING NUMBER: 612367-ENV
			SHEET: 1 OF 1
			ISSUE: AB

THIS INFORMATION IS CONFIDENTIAL AND PROPRIETARY TO TYCO ELECTRONICS CORPORATION AND ITS WORLDWIDE SUBSIDIARIES AND AFFILIATES (TE). IT MAY NOT BE DISCLOSED TO ANYONE OTHER THAN TE PERSONNEL, WITHOUT AUTHORIZATION FROM TE (www.te.com).

AB	DUK-71114	NDL	JCB	KJF	CEO	25/11/2019
ISSUE	CHANGE NOTE	DRAWN	CHECKED	APP. ENG.	APP. MARKETING	DATE